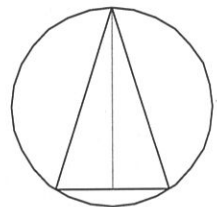


P13/V1467/PUL APP1 1 OF 7
 21-23 WALLINGFORD ST, WANTAGE



Rochester House,
 Eynsham Road,
 Farmoor,
 Oxford OX2 9NH
 Telephone: 01865 861281

Wallingford Street, Wantage
 Proposed development

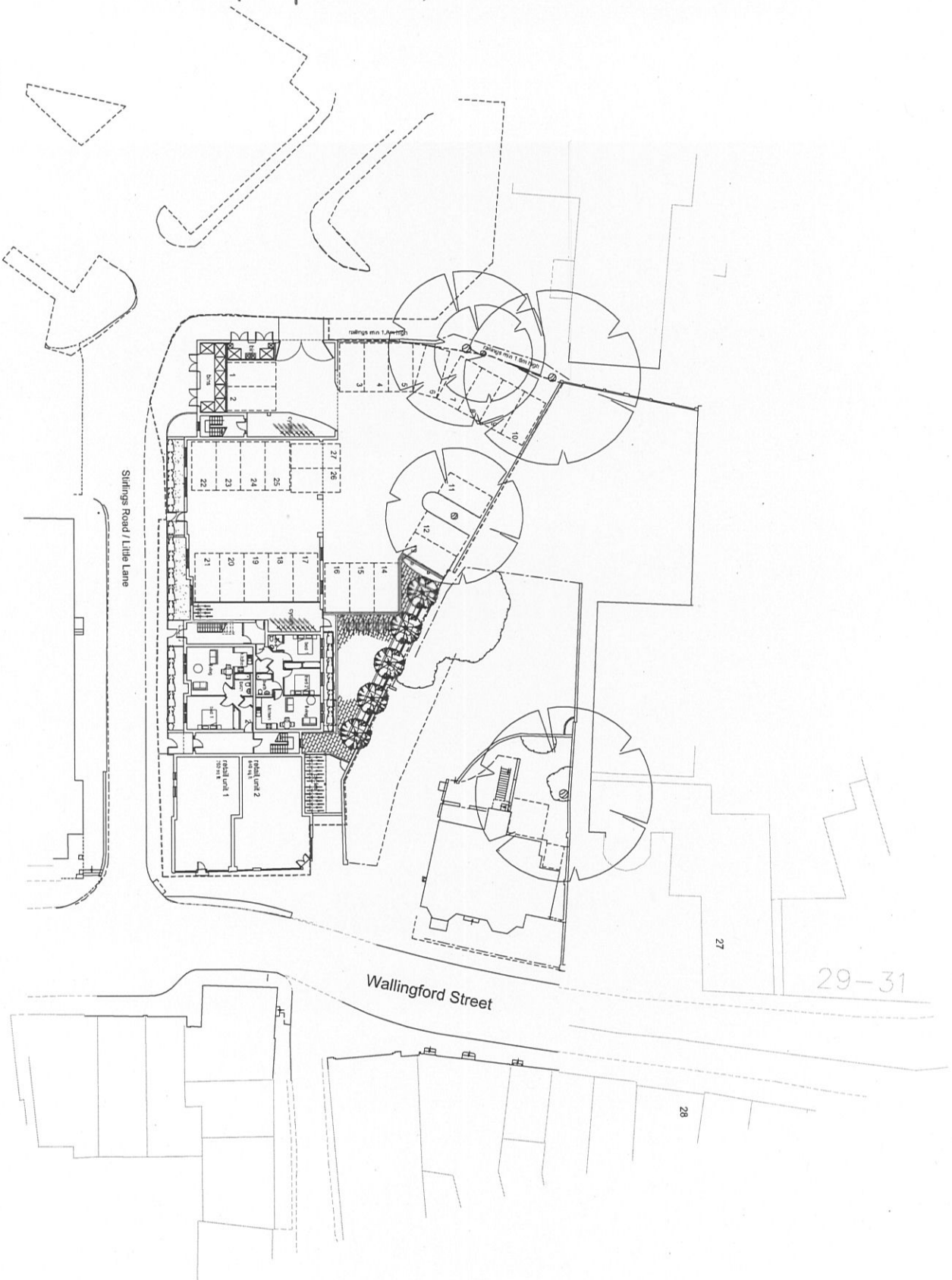
May 2013

1:1250@A4

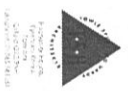
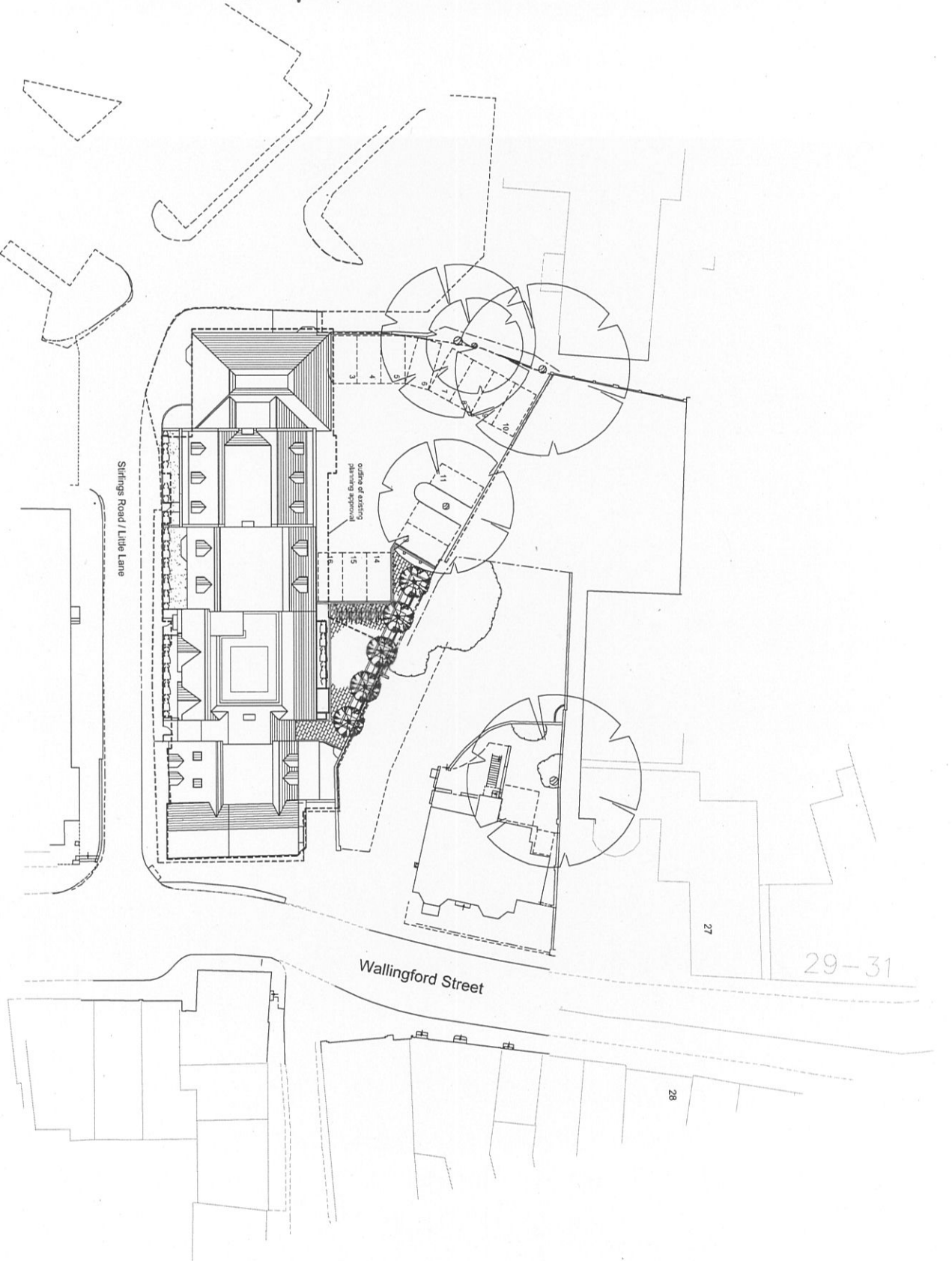
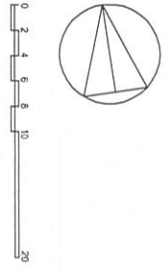
2012057

Site location plan

P47



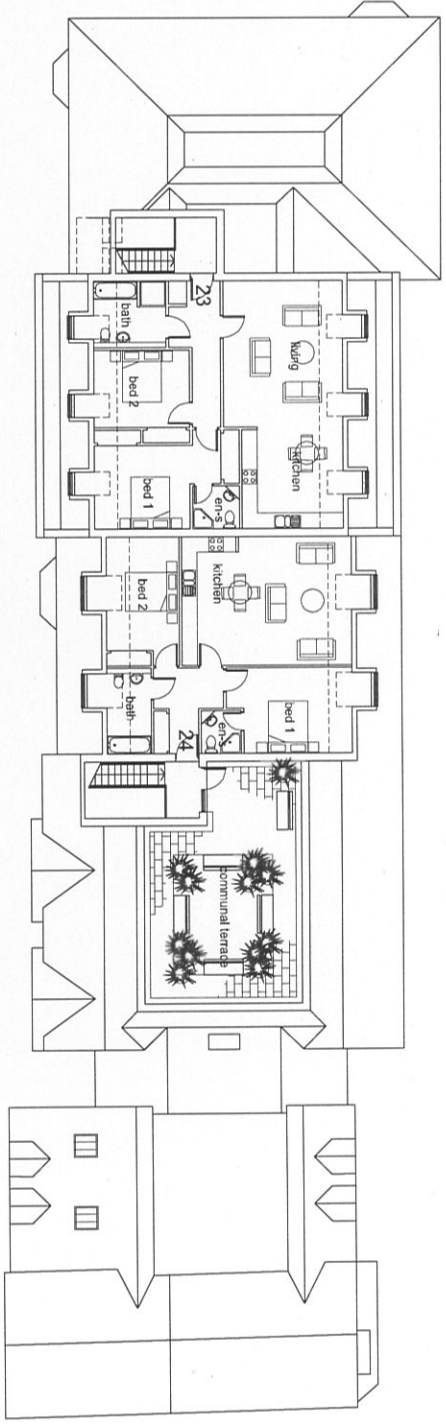
Wallingford Street, Warlage Proposed Development	May 2013
Site Plan	1.200@A1
	23012057
	P41B



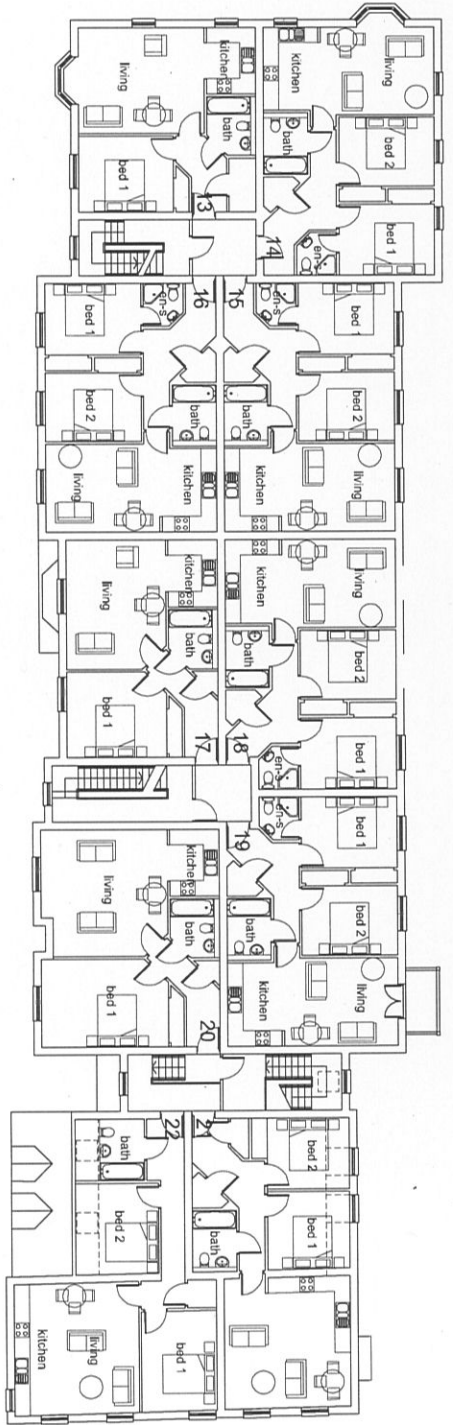
Wallingford Street, Warrage Proposed development	
Roof plan	May 2013 1:200 @ A1 23012057
P16A	P16A



third floor plans

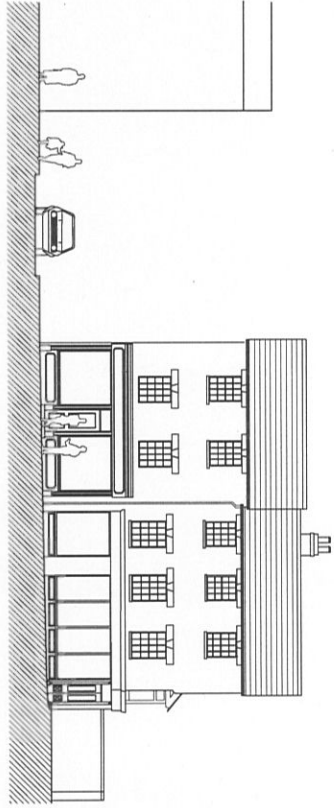
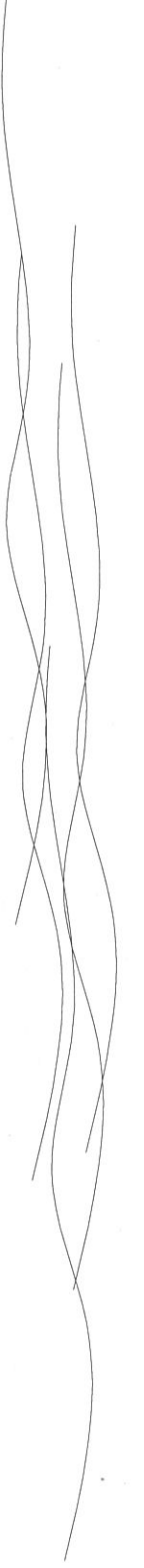


second floor plans

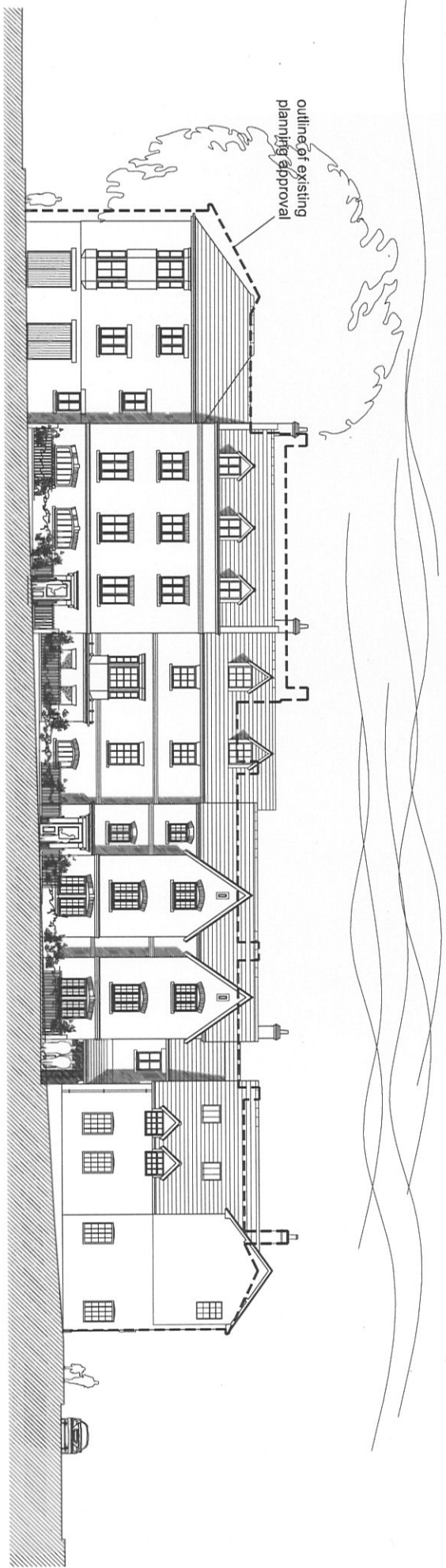


City of Wellington
 Planning and Building
 Development Services
 400 The Terrace
 Wellington, New Zealand


Wairingford Street, Wairidage Proposed development	May 2013
	1:100 @ A1
	2012057
Floor plans	P13



elevation to south (Wallingford Street)



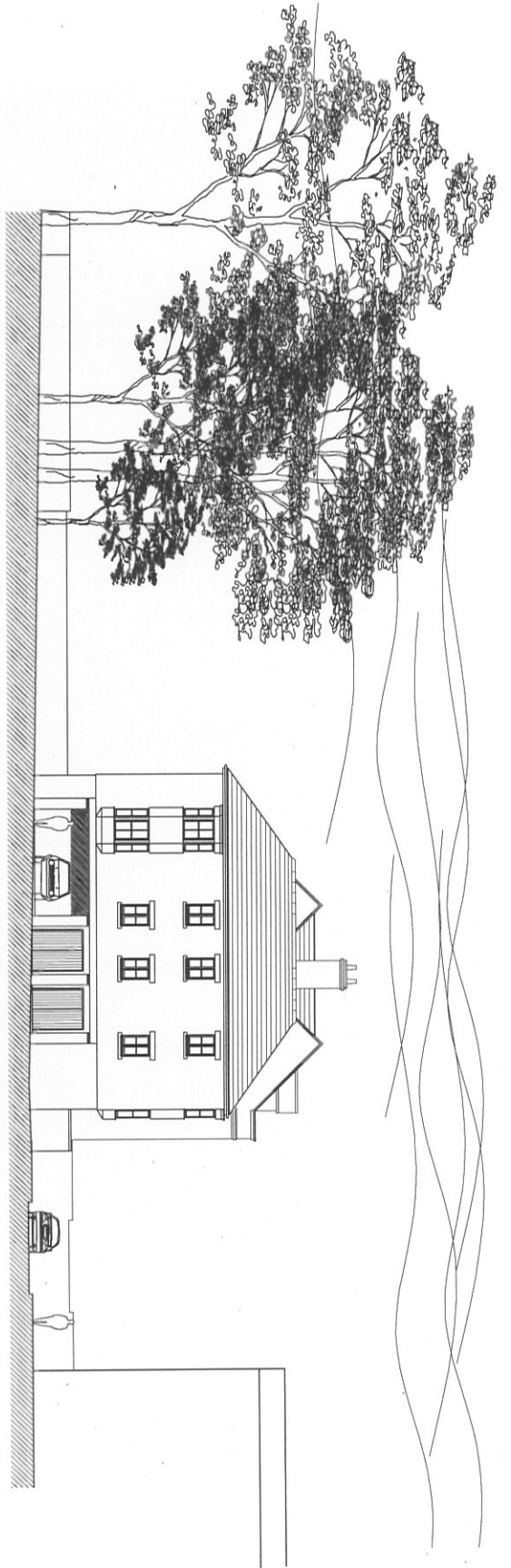
elevation to west (Stirling Road)

City of Nashville
Planning Department
1500 Broadway, Suite 2000
Nashville, TN 37203

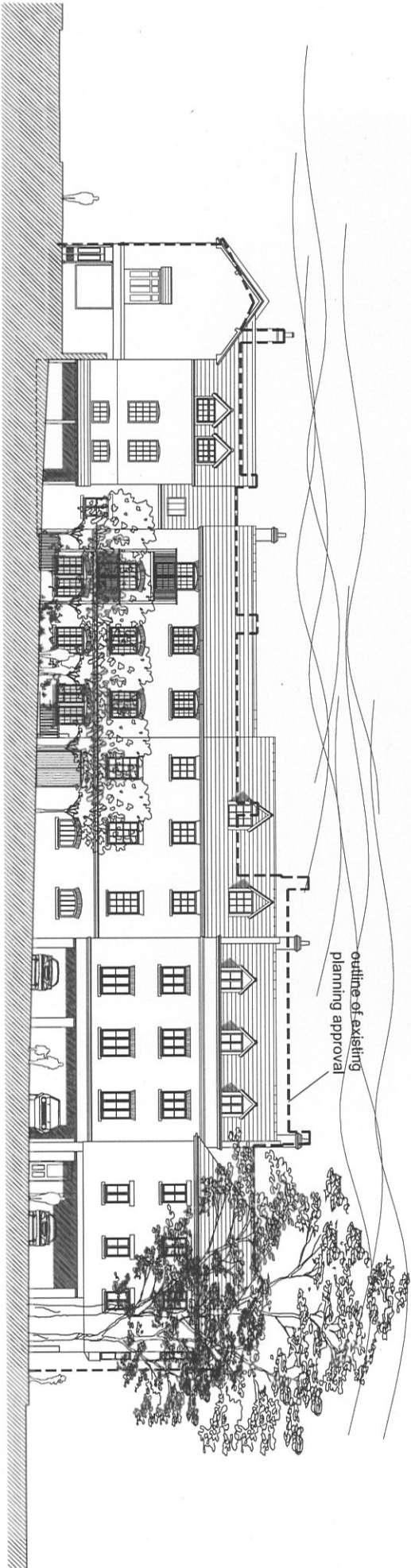
Wallingford Street, Warhage Proposed development	
May 2013	
1:100@A1	
2012057	
Elevations	P44

elevation to north



outline of existing
planning approval

elevation to east



Wallingford Street, Warrage
Proposed development

Elevation	May 2013
	1:100@A1
	2012057
	PA/B